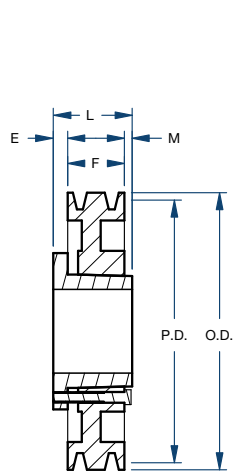
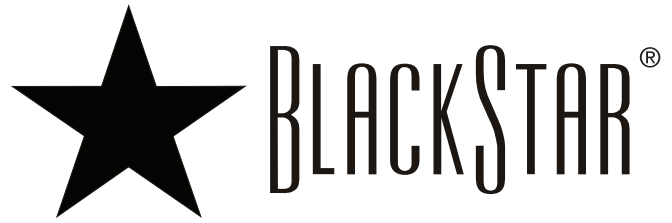
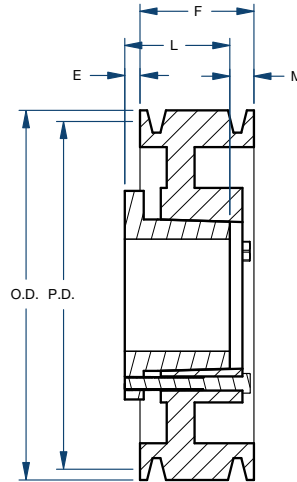


Sheaves

8V SERIES 4 GROOVE/QD



Type C



Type D

Part Number	Bushing	Bore Range	Type	Diameter (in)		Dimensions (in)				Weight less Bushing (lbs)
				Pitch	Outside	E	F	L	M	
4-8V1250F	F	1 - 4	D	12.30	12.50	5/32	4-7/8	3-3/4	1-9/32	75.0
4-8V1320F	F	1 - 4	D	13.00	13.20	5/32	4-7/8	3-3/4	1-9/32	81.0
4-8V1400F	F	1 - 4	D	13.80	14.00	5/32	4-7/8	3-3/4	1-9/32	87.0
4-8V1500F	F	1 - 4	D	14.80	15.00	5/32	4-7/8	3-3/4	1-9/32	91.0
4-8V1600F	F	1 - 4	D	15.80	16.00	5/32	4-7/8	3-3/4	1-9/32	96.0
4-8V1700F	F	1 - 4	D	16.80	17.00	5/32	4-7/8	3-3/4	1-9/32	104.0
4-8V1800F	F	1 - 4	D	17.80	18.00	5/32	4-7/8	3-3/4	1-9/32	114.0
4-8V1900F	F	1 - 4	D	18.80	19.00	5/32	4-7/8	3-3/4	1-9/32	121.0
4-8V2000J	J	1-1/2 - 4-1/2	D	19.80	20.00	0	4-7/8	4-5/8	1/4	136.0
4-8V2120J	J	1-1/2 - 4-1/2	D	21.00	21.20	0	4-7/8	4-5/8	1/4	145.0
4-8V2240J	J	1-1/2 - 4-1/2	D	22.20	22.40	0	4-7/8	4-5/8	1/4	154.0
4-8V2480M	M	2 - 5-1/2	C	24.60	24.80	25/32	4-7/8	6-3/4	1/4	176.0
4-8V3000M	M	2 - 5-1/2	C	29.80	30.00	25/32	4-7/8	6-3/4	1-3/32	224.0
4-8V3550M	M	2 - 5-1/2	C	35.30	35.50	25/32	4-7/8	6-3/4	1-3/32	267.0
4-8V4000M	M	2 - 5-1/2	C	39.80	40.00	25/32	4-7/8	6-3/4	1-3/32	310.0
4-8V4450M	M	2 - 5-1/2	C	44.30	44.50	25/32	4-7/8	6-3/4	1-3/32	363.0
4-8V5300M	M	2 - 5-1/2	C	52.80	53.00	25/32	4-7/8	6-3/4	1-3/32	437.0